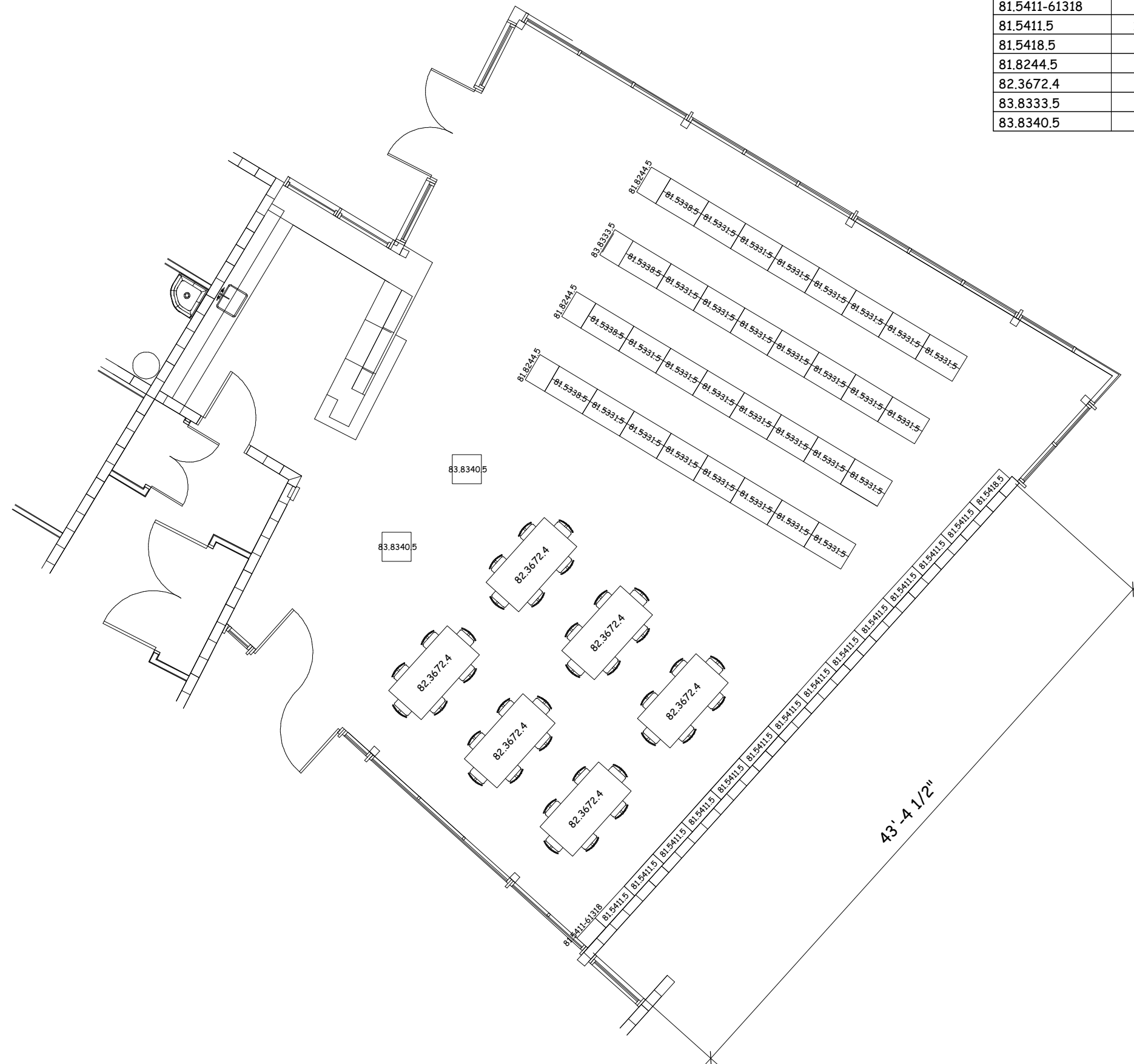


FLOOR PLAN

Model No	Qty	Model Description
81.5331.5	28	35 1/2"W x 44"H x 24"D Three Shelf Unit, Double Faced (Adder)
81.5338.5	4	36 1/2"W x 44"H x 24"D Three Shelf Unit, Double Faced (Starter)
81.5411-61318	1	22 1/2"W x 60"H x 12"D Four Shelf Unit (Adder)
81.5411.5	13	35 1/2"W x 60"H x 12"D Four Shelf Unit (Adder)
81.5418.5	1	36 1/2"W x 60"H x 12"D Four Shelf Unit (Starter)
81.8244.5	3	24"W x 44"H x 18 1/2"D End of Range Display
82.3672.4	6	72"W x 29"H x 36"D Rectangular Study Table
83.8333.5	1	24"W x 42"H x 18"D Dictionary Stand
83.8340.5	2	24"W x 53"H x 24"D Revolving Display



Note:
 - Verify All Dim's. Shown
 - Seating For 36 Students
 - Total Shelving Linear Footage = 744'
 744' x *14 = 10,416 Volumes
 (*14 Books Per Linear Foot)

FLEETWOOD GROUP, INC. 11832 JAMES ST., HOLLAND, MI. P.O. BOX 1259 49422-1259		
DESIGN FOR:	Cortez ES Pomona USD	PROJECT NO. MC
Pomona, CA		
TITLE: Reading Room E101 Layout		
DRAWN BY:	SCALE:	DATE:
CD	1/8" = 1'0"	04/04/07